

---

---

# 2017-2018 Winter NWEA Class Size vs. Growth Analysis

— Office of Teaching and Learning —

---

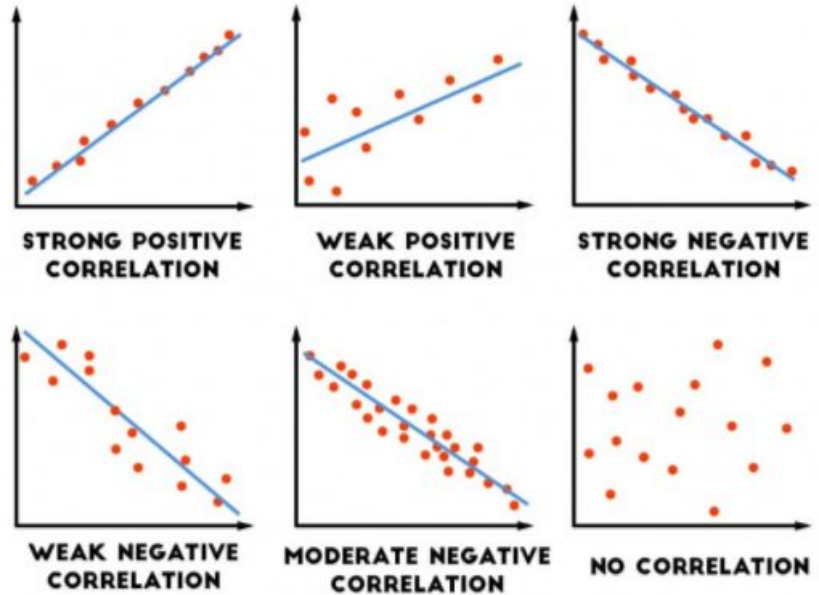
---

# Class Size and Research

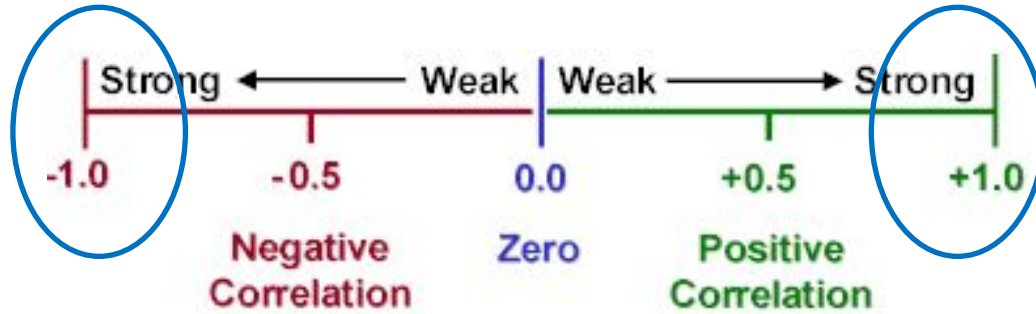
- Smaller class sizes...
  - Make it easier for teachers to build relationships
  - Provide more of an opportunity to get personalized attention
  - Support environments where students are more likely to be engaged/participate
  - Provide teachers with more flexibility to use different instructional approaches
  - Reduce the workload of teachers
- What about the impact on academics?
  - Primary - more of an impact
  - Intermediate and middle level - mixed bag
  - High School - no impact at all

# Correlation

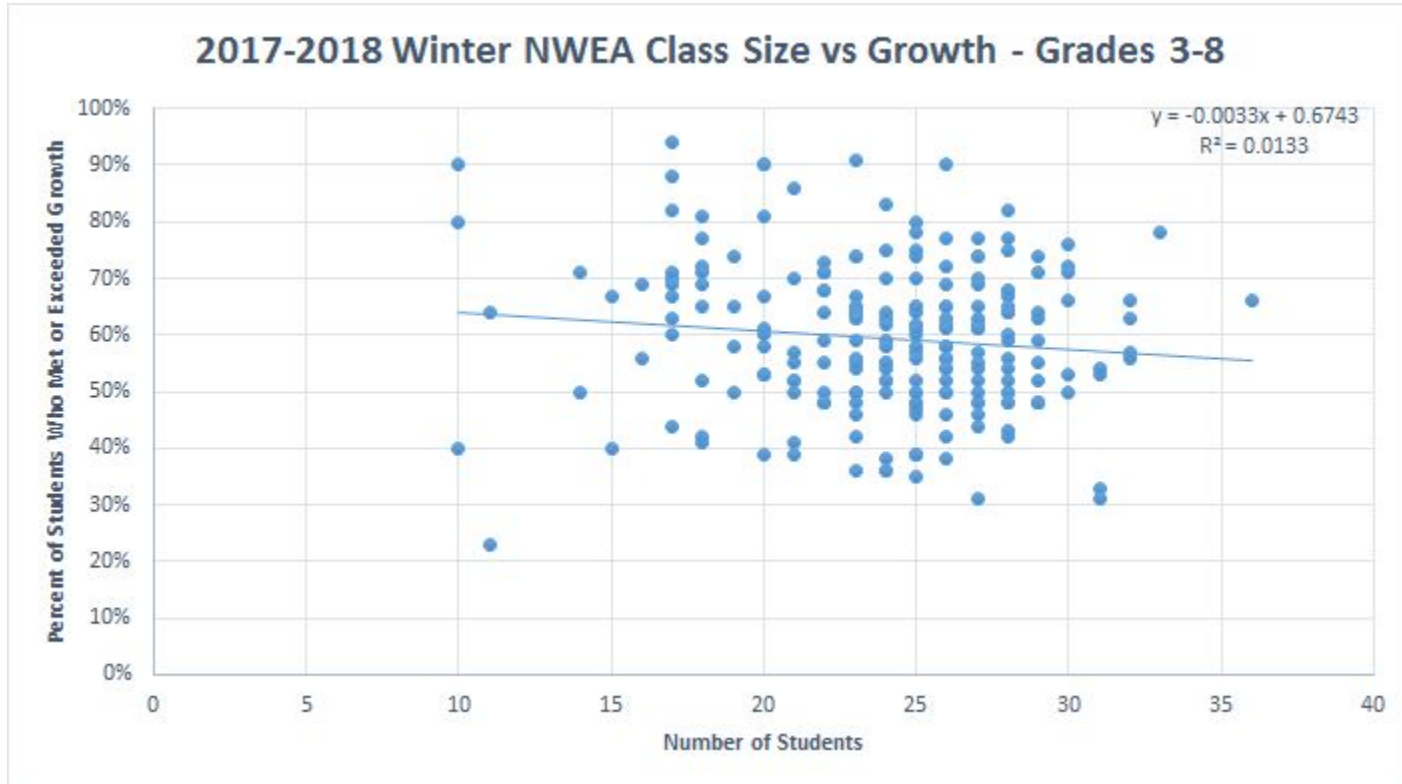
- Correlation describes the relationship between two variables.
- Correlation  $\neq$  Causation!



# Correlation

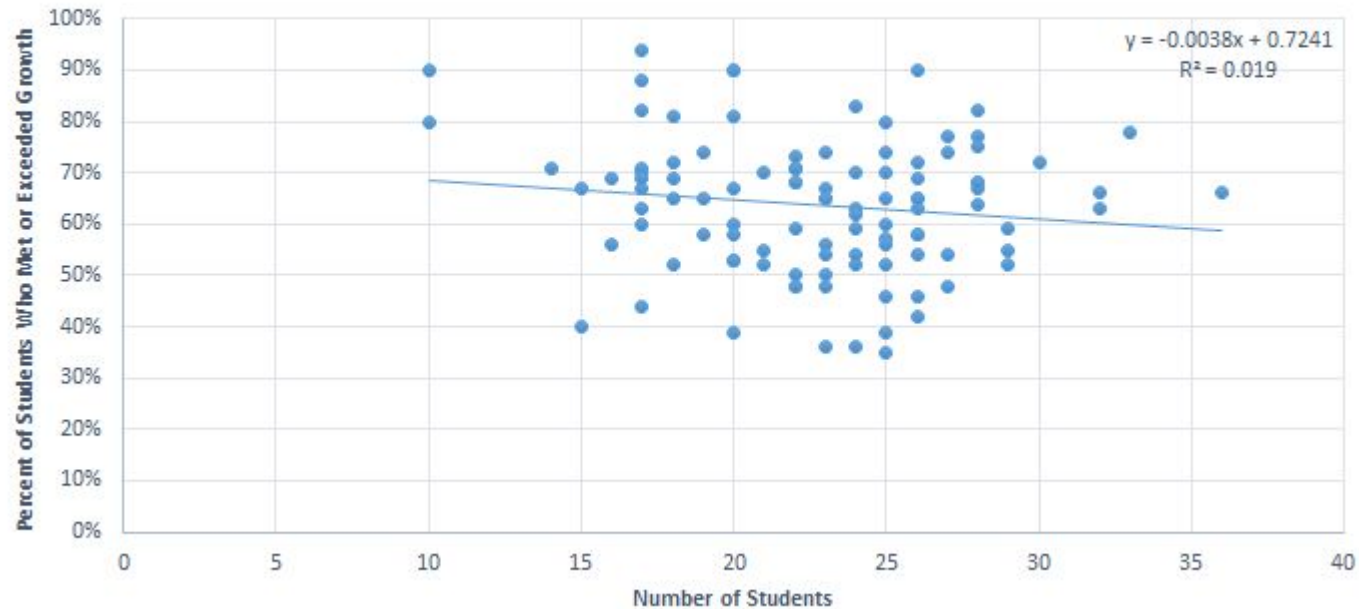


# Grades 3-8



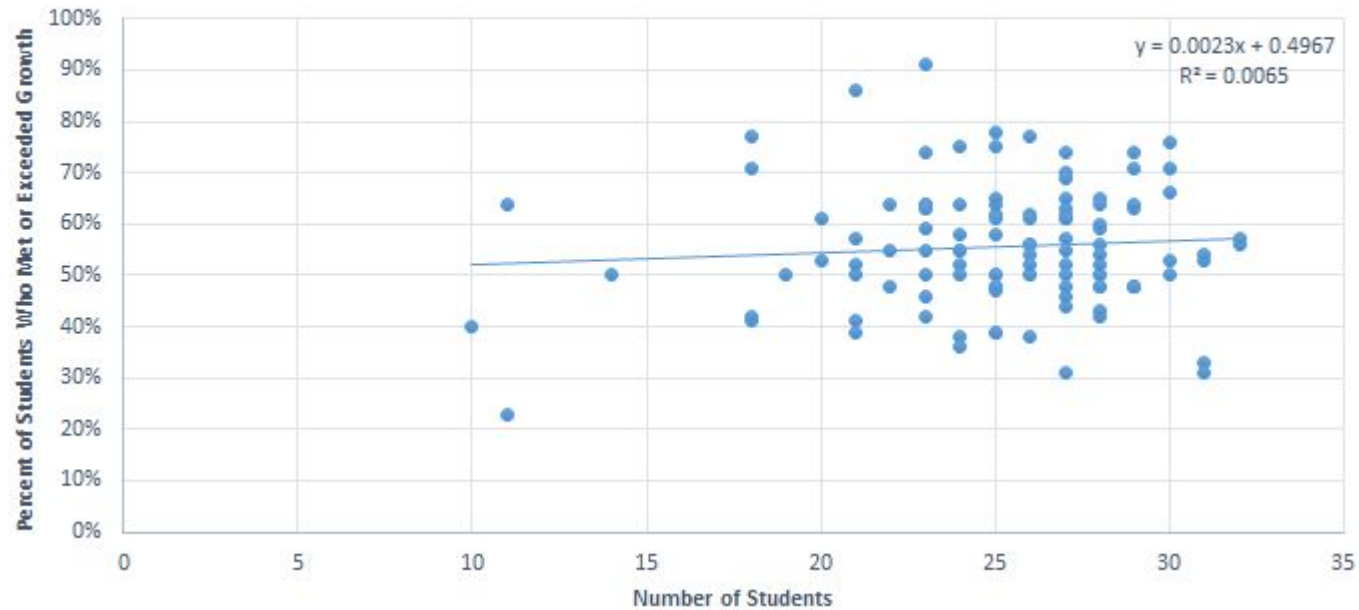
# Grades 3-5

2017-2018 Winter NWEA Class Size vs. Growth  
All Elementary

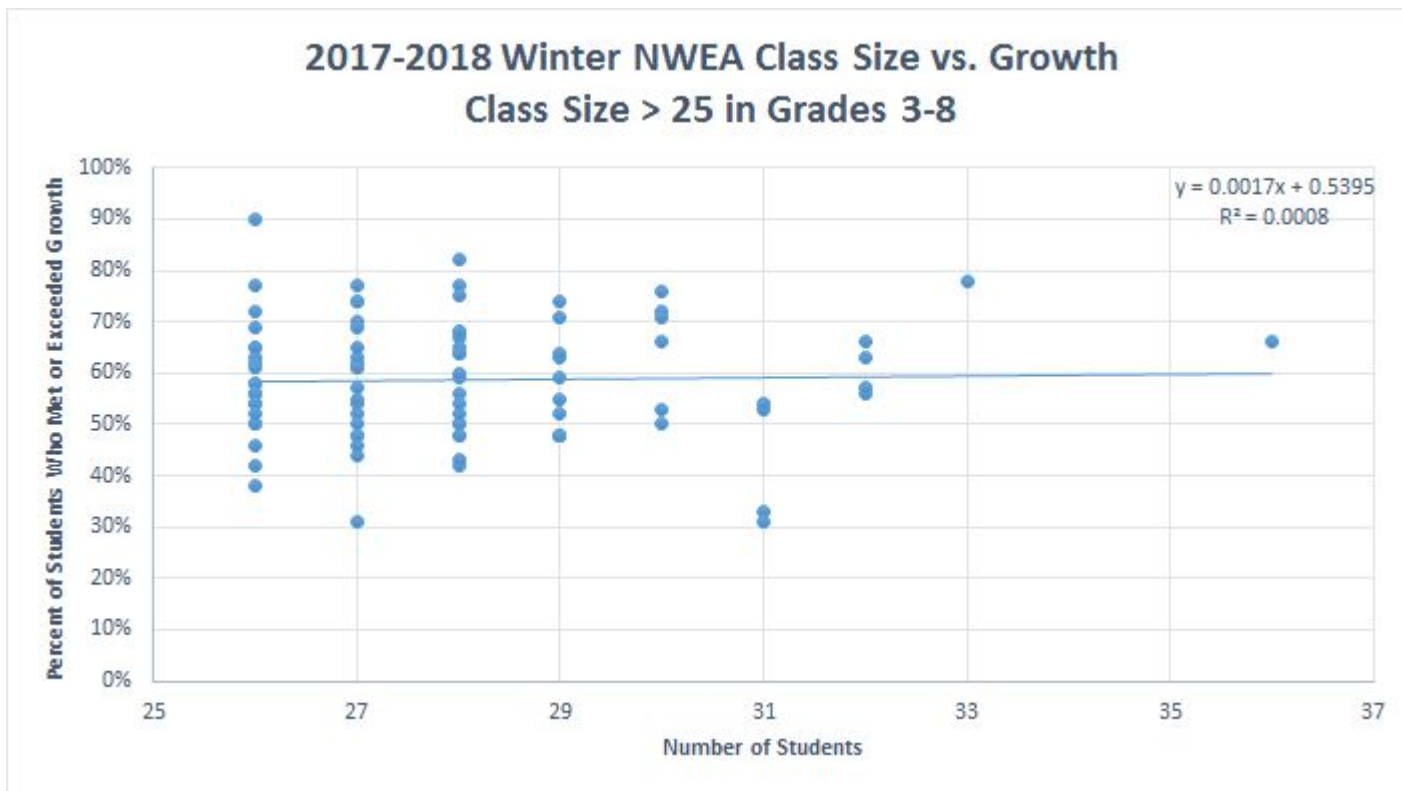


# Grades 6-8

2017-2018 Winter NWEA Class Size vs. Growth  
All Middle School

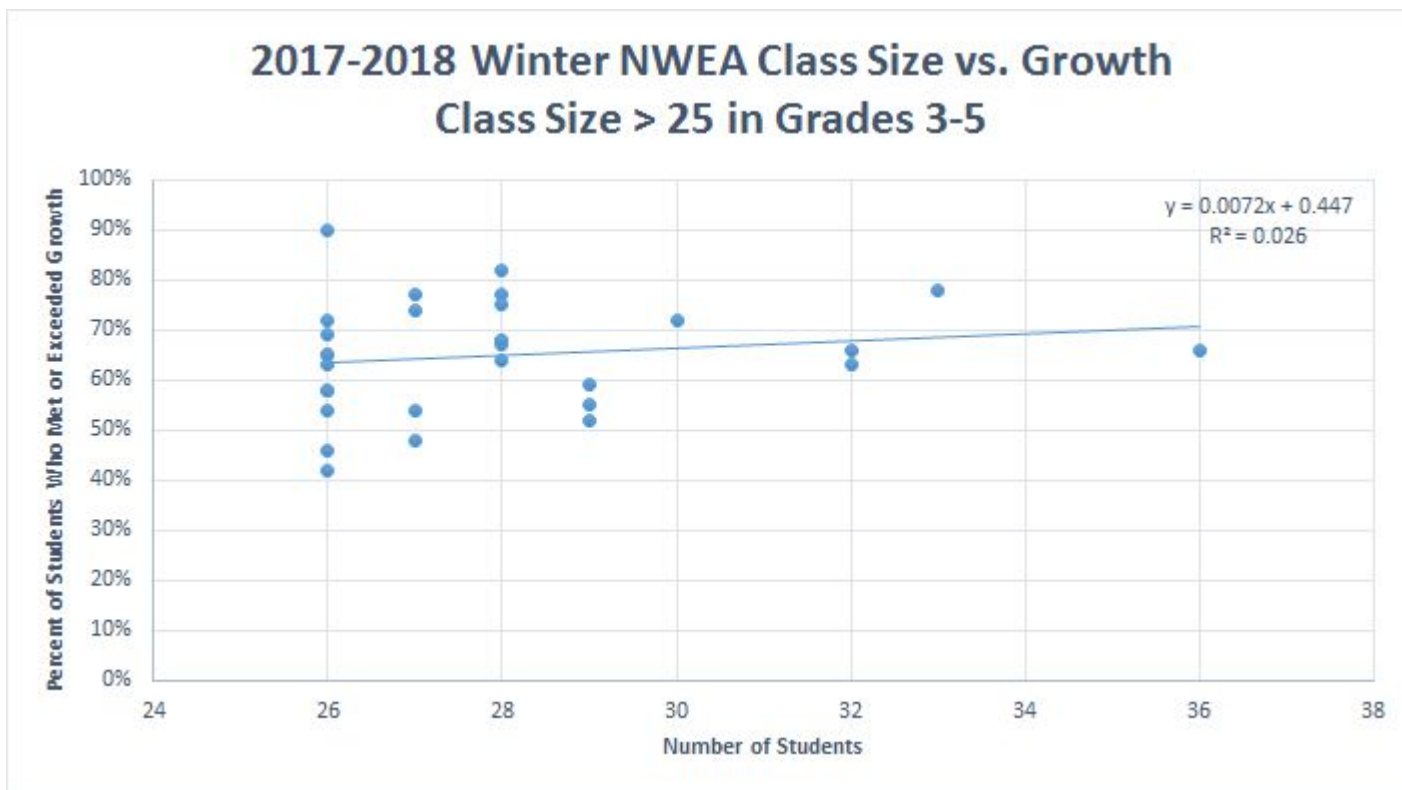


# Grades 3-8 - Class Size > 25



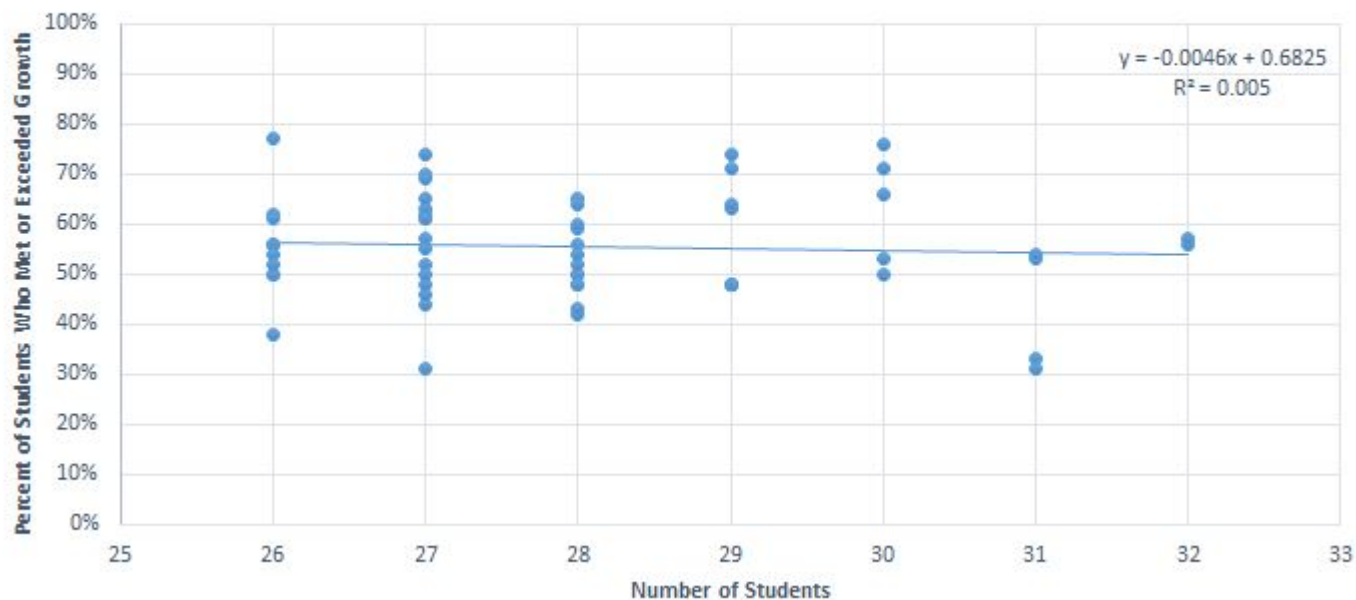


# Grades 3-5 - Class Size > 25



# Grades 6-8 - Class Size > 25

2017-2018 Winter NWEA Class Size vs. Growth  
Class Size > 25 in Grades 6-8



# Sub-Group Correlations

Sub-Group	Correlation	Sub-Group	Correlation
3-8 ELA	0.010	6-8 Honors	0.145
3-8 Class Size >25	0.028	3-5 Class Size > 25	0.161
3-8 ELA Honors/Plus	0.049	6-8 On Grade Level Math	0.189
3-8 On Grade Level ELA/Reading	0.071	3-8 Honors/Plus	0.200
6-8 Class Size > 25	0.071	3-8 Math Honors/Plus	0.200
3-8 On Grade Level	0.073	6-8 On Grade Level ELA/Reading	0.212
6-8 All	0.135	3-5 On Grade Level ELA	0.212
3-5 Plus	0.081	3-5 On Grade Level	0.255
3-8 All	0.115	3-8 Math	0.271
6-8 On Grade Level	0.135	3-8 On Grade Level Math	0.276
3-5 All	0.138	3-5 On Grade Level Math	0.317

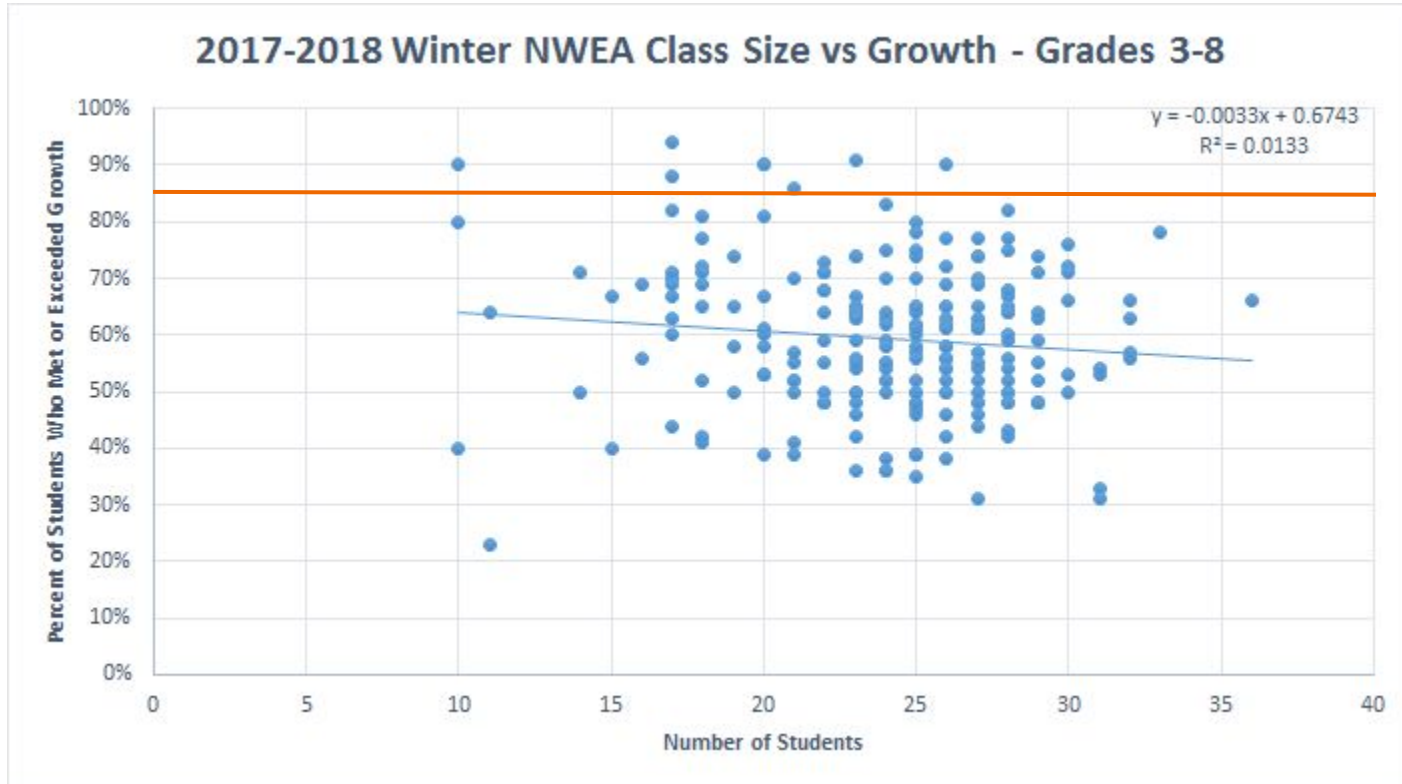
# Analysis

- The impact of class size on student growth is directly in line with what the research suggests:
  - Mixed results at the intermediate and middle level

# Questions to Further Investigate

- How do teachers with a similar class size (large and small) and student population have significantly different results?
- What impact does larger class sizes have on the social-emotional well-being of our students in Quakertown?

# Grades 3-8



# Questions to Further Investigate

- How do teachers with a similar class size (large and small) and student population have significantly different results?
- What impact does larger class sizes have on the social-emotional well-being of our students in Quakertown?
- What supports can the building administrator, instructional coaches, or district level supervisors offer to those teachers who may be struggling to get students to meet expected growth?